

Tablet Weaving: 4-Hole Patterns

Ermine 1

Stringcrafter

Doubleface charts for ermine points running parallel to the edge of the band, with oseberg-style border on one side



Three different styles of chart.
Print your favourite & have a go!

Chart 1: created in GTT

Threading diagram drafted separately

Each cell/rectangle represents one card and two rows.

The border cards are not included in the pattern chart. They always turn forward.

Rows 1 + 2: turn all cards forwards.
Rows 3 + 4: turn all pattern cards backwards, and all border cards forwards.
Rows 5 + 6: turn background pattern cards and border cards forwards. Turn foreground pattern cards backwards.
Rows 7 + 8: turn background pattern cards backwards and all other cards forwards.

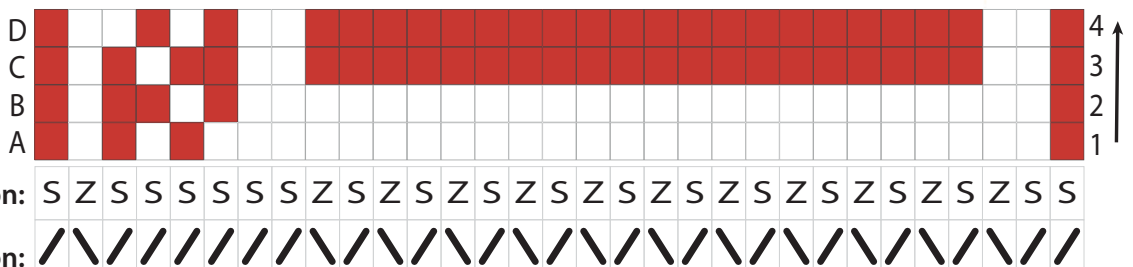
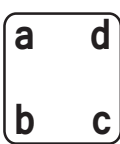
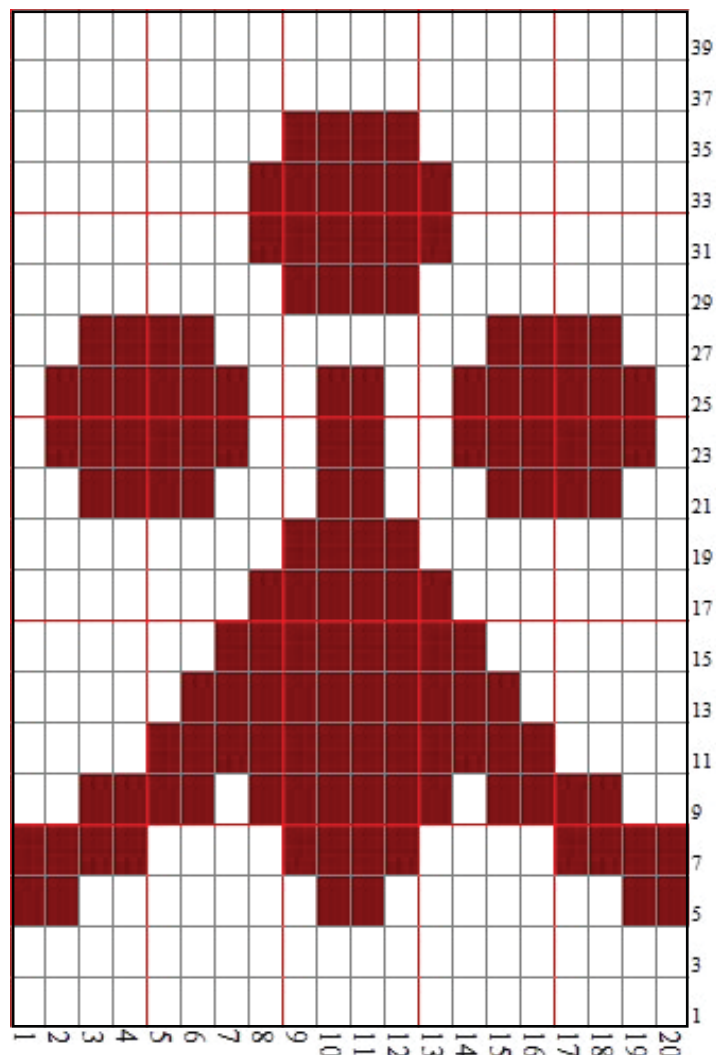
You will need:

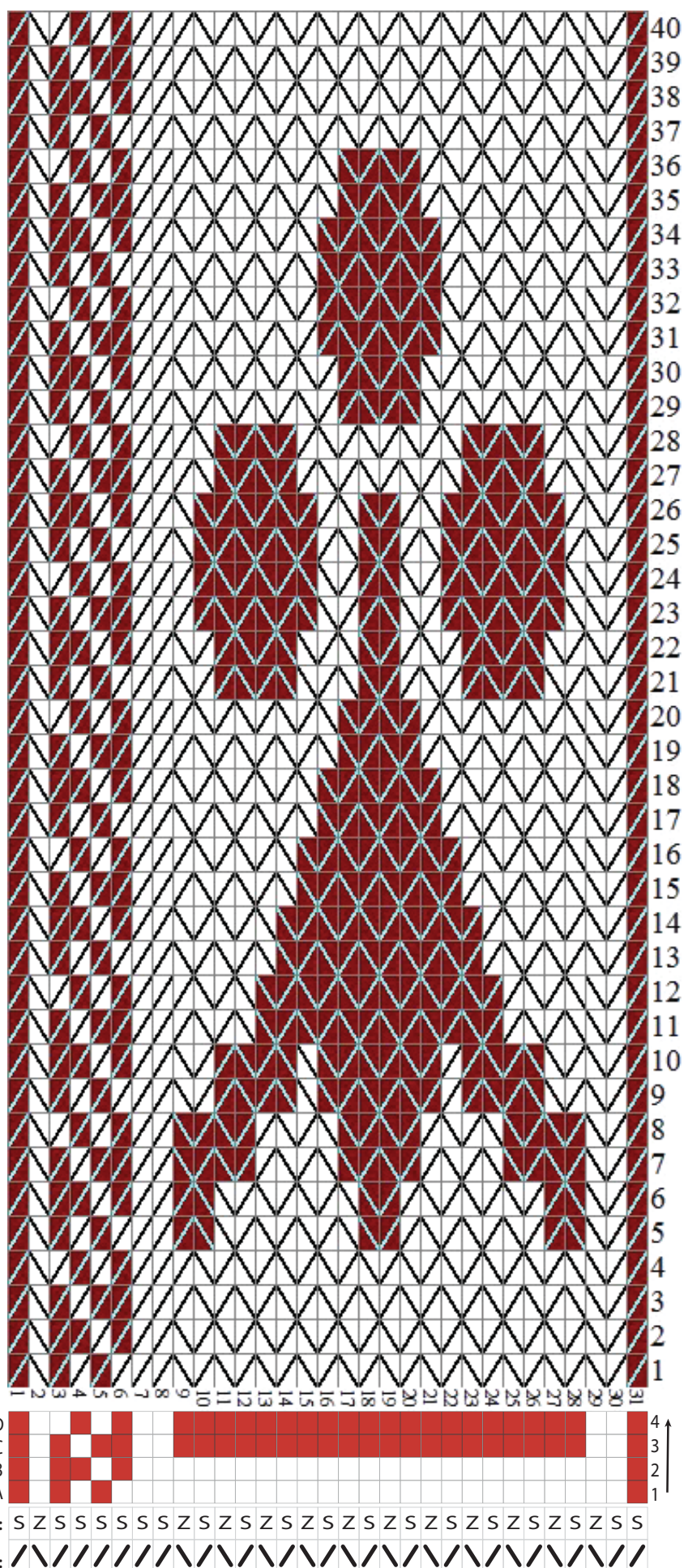
31 cards

124 Threads:

58 foreground

66 background






Each square represents one card and two rows.

The design outline shows the points where the color changes from foreground to background & vice versa. It is not a turning instruction.



 31 cards

124 Threads:

■ 58 foreground

66 background

Key:

☐ ¼ turn forward

■ ¼ turn backward

└ design outline