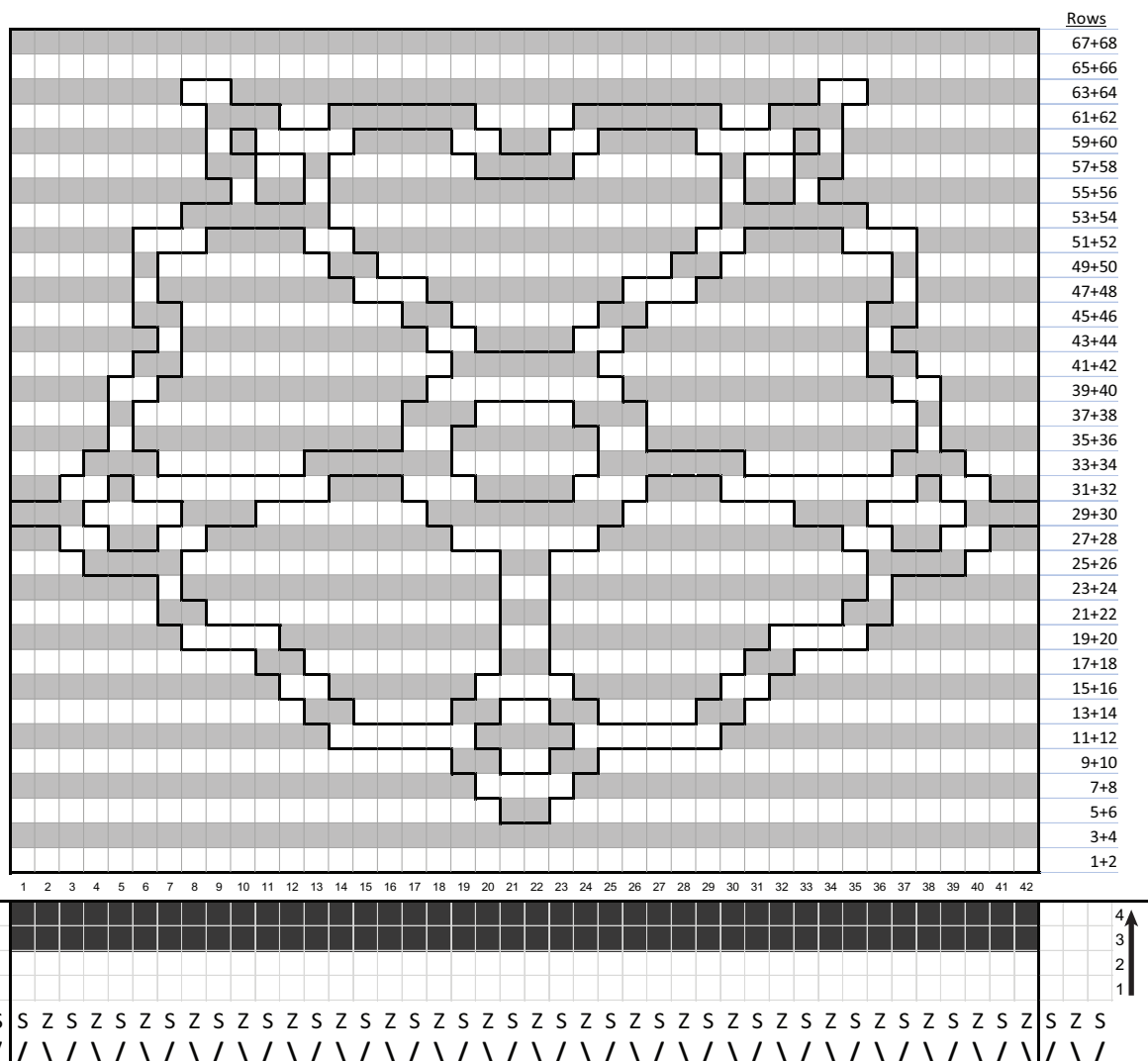




Rose 1

Doubleface chart for an outlined rose with five petals, five leaves and a pierced centre.



You will need:



192 Threads:

84 foreground

108 background

Key:

☐ ¼ turn forward

■ ¼ turn backward

└ design outline

Notes

- Each cell/rectangle represents one card and two rows. (So, **work each row in the chart twice.**)
- The border cards are included in the threading diagram. They do not appear in the chart. They always turn forward.
- The design outline shows the points where the color changes from foreground to background & vice versa. It is not a turning instruction.

Starting at the bottom of the chart:

Rows 1 + 2: Turn background pattern cards and border cards forwards. Turn foreground pattern cards backwards.

Rows 3 + 4: Turn background pattern cards backwards and all other cards forwards.

And so on...

Tips

- Match the border cards to the background color.
- To reduce the chance of the pattern elongating:
 - Beat the weft in very firmly.
 - Use thinner thread for the weft.

